

Launch Pad

© 2018 Toby Walker

Rhythm techniques

Key Of G

Guitar

G Bass chick bass down up bass chick

Gtr.

Boom chick bass up down up Bass note down up bass down

Gtr.

C Bass chick D Em

Alternating Bass

Gtr.

G C

Gtr.

D Em

Gtr.

G Em C D G

²G

"Going Down The Road Feeling Bad"

Gtr.

Gtr.

C

Gtr.

G

Gtr.

C

Gtr.

G

Em

Gtr.

G

D

Gtr.

G

Gtr.

Adding the "hammer-on."

Launch Pad

The first system shows a G chord (0-2-3-3) with a hammer-on (h) on the 2nd fret of the 3rd string. The second system shows an Em chord (0-2-0-0) with a hammer-on (h) on the 2nd fret of the 3rd string. The third system shows a C chord (0-2-3-0) with a hammer-on on the 2nd fret of the 3rd string. The fourth system shows a D chord (0-2-3-2) with a hammer-on on the 4th fret of the 3rd string.

Adding the 'sus-4' pull-off.

The first system shows a G chord (0-2-3-3) with a pull-off from the 3rd fret to the 1st fret on the 3rd string. The second system shows a C chord (0-2-3-0) with a pull-off from the 3rd fret to the 2nd fret on the 3rd string. The third system shows an Em chord (0-2-0-0) with a pull-off from the 2nd fret to the 0th fret on the 3rd string. The fourth system shows a D chord (0-2-3-2) with a pull-off from the 3rd fret to the 2nd fret on the 3rd string.

Bass runs

The first system shows a G chord (0-2-3-3) with a bass run: 0-2-3. The second system shows a C chord (0-2-3-0) with a bass run: 3-0-2-3. The third system shows a G chord (0-2-3-3) with a bass run: 3-3-2-0. The fourth system shows an Em chord (0-2-0-0) with a bass run: 0-2. The fifth system shows a G chord (0-2-3-3) with a bass run: 3-2-3. The sixth system shows a D chord (0-2-3-2) with a bass run: 0-2-3. The seventh system shows a G chord (0-2-3-3) with a bass run: 0-1-2-0-2-0. The eighth system shows a C chord (0-2-3-0) with a bass run: 0-2-3.

4 **Creating a complete accompaniment.**

Gtr. **G**

3 0 0 2 3 0 | 3 0 0 2 3 0 | 3 0 0 2 3 0 | 3 0 0 2 3 0

Gtr. **C** **G**

3 0 2 0 2 0 | 3 0 2 0 | 3 0 1 2 0 2 0 | 3 0 2 0 2 0

Gtr. **C** bass chick bass chick bass chick **G** **Em**

3 0 2 0 2 0 | 3 0 2 0 | 3 0 1 2 0 2 0 | 0 2 0 2 0

Gtr. **G** **D** **G**

3 0 2 3 | 0 2 3 | 3 0 1 2 0 2 0 | 3 0 2 3

"Carter Style"

Gtr. **G**

3 0 0 3 0 0 | 3 0 0 3 0 0 | 3 0 0 3 0 0 | 2 0 2 3 2 0

Gtr. **C** **G**

0 0 3 0 2 0 | 0 2 0 2 0 2 | 0 0 2 0 2 0 | 3 0 2 0 2 0

Gtr. **C** **G** **Em**

3 0 2 0 2 0 | 0 2 0 2 0 2 | 0 0 3 2 0 0 | 3 2 0 0 2 0

Gtr. **G** **D** **G**

3 0 2 3 | 0 2 3 | 3 0 2 0 2 0 | 3 0 2 3 0 0

Key of C

Gtr. C | F | G | C

Gtr. C | F | G | C

bass chick bass chick bass chick

Gtr. C | F | G | C

hammer - on

Gtr. C | F | G | C

Dark Hollow

Gtr. C G C

Gtr. C F C

Gtr. C C7 F

Gtr. C G C

6 Dark Hollow Examples Launch Pad

Gtr. C G C

Gtr. F C

Gtr. C C7 F

Gtr. C G C

Carter Style

Gtr. C G C

Gtr. C F C

Gtr. C F

Gtr. C G C

Gtr.

Alternate Chords

Keep On Truckin' Mama

Gtr. C A D G C

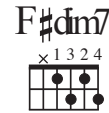
Gtr. C A D G

Gtr. C C7 F

Gtr. C A D G C A

Gtr. D G C

Now use an F#dim7 chord in the 12th measure.



Variations:

First off, let's use open A7, D7, and G7 instead of the major chords.

Gtr.

Here are other ways to play a 7th chord and the C major. Root notes are indicated with a 'o'

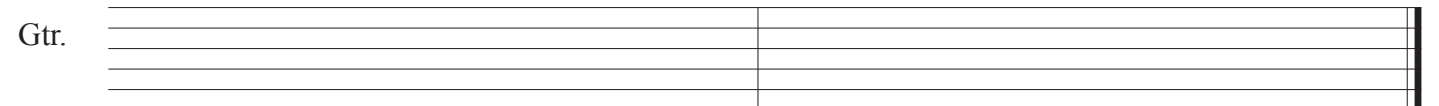
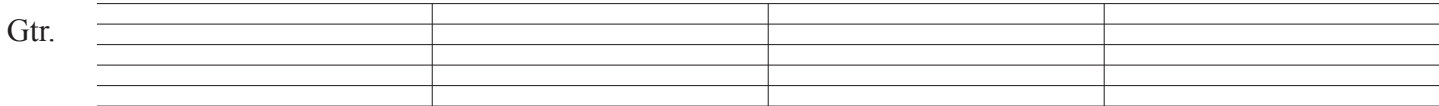
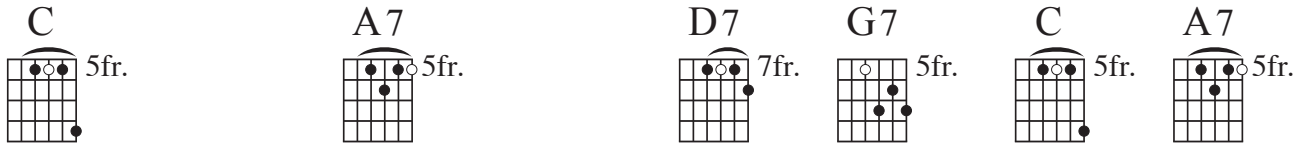
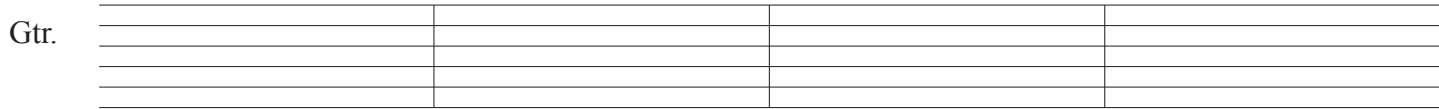
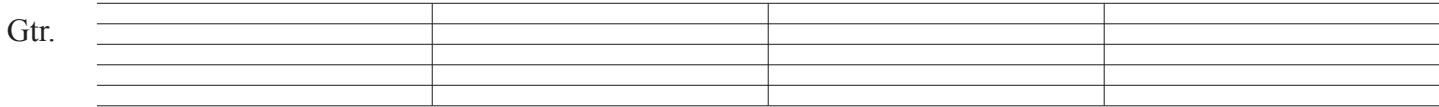
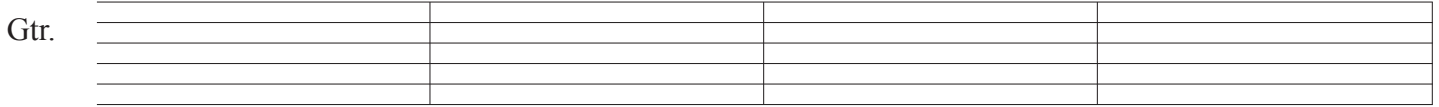
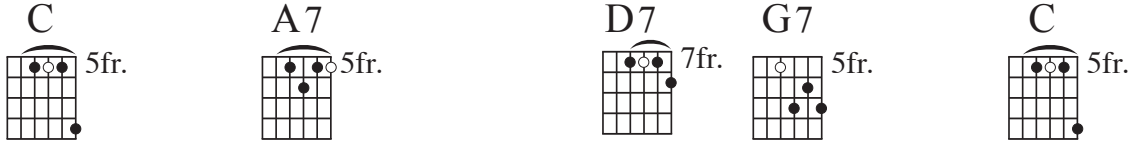
D7 D7 D7 D7 G7 G7 G7 G7

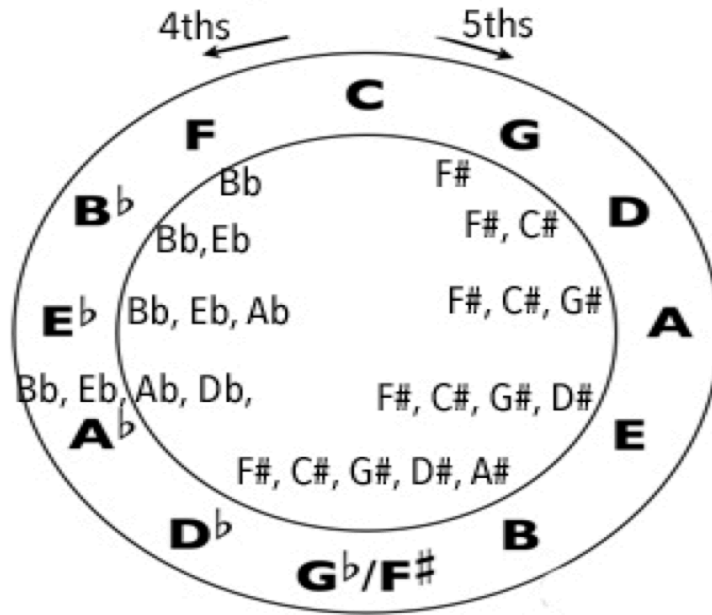
Gtr.

A7 A7 A7 A7 C C C C

Gtr.

Keep On Truckin' With Alternate Chords





Fat Cats Go Down Alleys

A B C D E F G A B C D E F G

Starting with the letter C, count up 7 more letters until you reach C again. - C, D, E, F, G, A, B, C. It's name would be the C major scale. Notice there are no sharps or flats. Also notice that the C at the top of the circle has no sharps or flats next to it.

Now, count from the letter C up to G, which is the fifth degree of the scale

Looking at our chart again, if we move clockwise from the C we arrive at the letter G. You'll notice that the arrow is indicating that we moved a fifth up the scale. You'll also notice that there is an F# next to the G.

Now, starting at the letter G in our alphabet, count up until you reach another G: G, A, B, C, D, E, F, G.

Because there's an F# on the inside of our circle next to the G, change the F in that line to an F#. Now we get this: G, A, B, C, D, E, F#, G. That is the G Major scale.

Let's move one more degree clockwise in that circle, which by the way is called the Circle of Fifths. From the G we arrive at a D. Next to that letter are two sharps... the F# and C#. Plugging those sharps into our alphabet and counting forward like we did in the key of C and G, we have the following notes: D, E, F#, G, A, B, C# D.

So far, we have figured out the Major Scale in three keys.

Key of C - C, D, E, F, G, A, B, C

Key of G - G, A, B, C, D, E, F#, G

Key of D - D, E, F#, G, A, B, C#, D

Looking at our Circle of Fifths again, we can see that the next Major key would be A. Using the same system, we would then wind up with the following notes:

Key of A - A, B, C#, D, E, F#, G# A

That key has 3 sharps.

The next one would be:

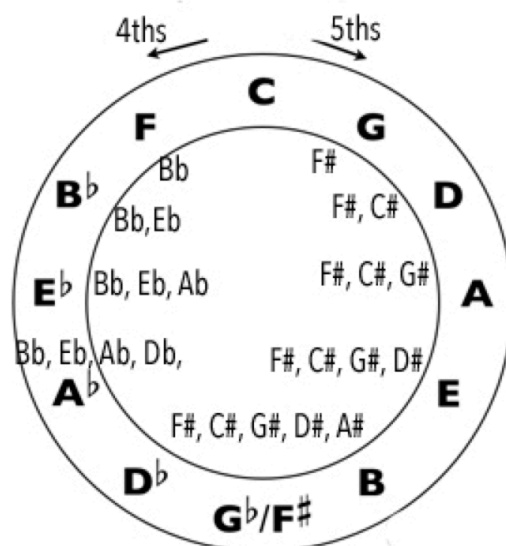
Key of E - E, F#, G#, A, B, C#, D#, E

.. which has 4 sharps.

Now if we went the other direction, counterclockwise from the C, the same pattern would be true of the notes in that direction.

The key of F would have one flatted note, a Bb. And the notes in the F Major scale would be:

F, A, Bb, C, D, E, F



Fat Cats Go Down Alleys

Launch Pad

12
KEY OF G

Will The Circle Be Unbroken In Two Keys

Gtr. G

Gtr. C

Gtr. G

Gtr. G

KEY OF C

Gtr. C

Gtr. F

Gtr. C

Gtr. C